

TM 5-4310-278-25P

DEPARTMENT OF THE ARMY TECHNICAL MANUAL

ORGANIZATIONAL, DIRECT AND GENERAL SUPPORT,
AND DEPOT MAINTENANCE REPAIR PARTS
AND SPECIAL TOOLS LIST

COMPRESSOR, ROTARY: AIR; FRAME MOUNTED,
2 WHEEL PNEUMATIC TIRED, GASOLINE ENGINE,
60 CFM, 6.5 PSI

(HARRIS MODEL 4MV) FSN 4310-935-5345

This copy is a reprint which includes current
pages from Changes 1 and 2.

HEADQUARTERS, DEPARTMENT OF THE ARMY
FEBRUARY 1969

CHANGE }
No. 2 }

HEADQUARTERS
DEPARTMENT OF THE ARMY
WASHINGTON, D.C., 2 June 1986

Organizational, Direct and General Support,
and Depot Maintenance Repair Parts
and Special Tools List

COMPRESSOR, ROTARY: AIR; FRAME MOUNTED,
2 WHEEL PNEUMATIC TIRED, GASOLINE ENGINE,
60 CFM, 6.5 PSI
(HARRIS MODEL 4MV) FSN 4310-935-5345

TM 5-4310-278-25P, 14 February 1969, is changed as follows:

Page vi, paragraph 8, Recommendations for Maintenance Publication improvements, line 6, change "General, U.S. Army Mobility Equipment Command, ATTN: AMSME-MPP, 4300 Goodfellow Boulevard, St. Louis, MO. 63120" to read "Commander, U.S. Army Troop Support Command, ATTN: AMSTR-MCTS, 4300 Goodfellow Boulevard, St. Louis, MO 63120-1798."

Page 11, Item 47, column 1 change "POT" to read "PAFHH"; column 2 change "2805-072-4871" to read "2805-01-169-1100"; column 3 change "Engine Assembly, Gasoline 2A016-3 (97403)" to read "Engine Assembly, Gasoline 24016-4 (97403)."

By Order of the Secretary of the Army:

JOHN A. WICKHAM, JR.
General, United States Army
Chief of Staff

Official:

R. L. DILWORTH
Brigadier General, United States Army
The Adjutant General

DISTRIBUTION:

To be distributed in accordance with DA Form 12-25A Organizational, Direct Support and General Support Maintenance requirements for Compressor, Rotary, Air, Gas Engine, Frame Mounted, 2 Wheel, 60 CFM, 6.5 PSI (4MV).

CHANGE }
No. 1 }

HEADQUARTERS
DEPARTMENT OF THE ARMY
WASHINGTON, D.C., 22 October 1969

**Organizational, Direct and General Support, and Depot
Maintenance Repair Parts and Special Tools List**

**COMPRESSOR, ROTARY: AIR; FRAME MOUNTED, 2-WHEEL
PNEUMATIC TIRED, GASOLINE ENGINE, 60 CFM, 6.5 PSI
(HARRIS MODEL 4 MV) FSN 4310-935-5345**

Current as of 19 September 1969

TM 5-4310-278-25P, 14 February 1969, is changed as follows:

Page iii, Paragraph 3. In the first sentence, "VII" is changed to read "VI."

Paragraph 3a. (1). Source code C and explanation are rescinded.

Page iv, Paragraph 3a (3). Recoverability code R and explanation are superseded as follows:

<i>Code</i>	<i>Explanation</i>
R	Applied to repair parts (assemblies and components) which are considered economically repairable at direct and general support maintenance levels. When the maintenance capability to repair these items does not exist, they are normally disposed of at the GS level. When supply considerations

dictate, some of these repair parts may be listed for automatic return to supply for depot level repair as set forth in AR 710-50. When so listed, they will be replaced by supply on an exchange basis.

Page vi, Paragraph 7. The following is added to the list of Federal Supply Codes for Manufacturers in proper numerical order:
66205. . . Wittek Mfg. Co.

The following is deleted from the list of Federal Supply Codes for Manufacturers:
75665. . . Lovejoy Flexible Coupling Co.

SECTION II. PRESCRIBED LOAD ALLOWANCE

Page	Line	Action	(1) Federal stock number	(2) Description	(3) 15-day org maint alw			
					(A) 1-5	(B) 6-20	(C) 21-50	(D) 51-100
				Group 04--Hose Assembly, Inflator Valve and Fittings				
vii	2	Add item after line 1, Valve, Inflator	4730-069-9075	Nipple D006-012 (72661)	*	*	*	2
	3	Add item after line 2	5330-505-6186	Washer, non-metallic AWS6 (72661)	*	*	*	2

Page	Line	Action	1			2	3	4	5	6	7				8						
			Source Maintenance and recoverability code								Federal stock number	Description	Unit of issue	Quantity incorporated in unit pack	Quantity incorporated in unit	15-day organizational maint. allowances				Figure No.	Item or Symbol No.
			Source	Maintenance	Recoverability											1-5	6-20	21-50	51-100		
2	4	Add part number and mfr code in col 3				5310-881-9369	Section III-Repair Parts for Organizational Maintenance Group 01-Frame, Engine, Fuel Tank, Toolbox, Wheel NUT, WING : Filter, 1/4-20 thd size MIL-S-5059 (96906)														
	9	Ch col 3				5305-543-2224	SCREW, MACHINE: Toolbox mtg and gas tank, 1/4-20 thd size 1/2 in. lg MS35223-79 (96906)														
	10	Ch col 3				5310-167-0719	WASHER, LOCK: Toolbox mtg and gas tank, 1/4 in. screw size, internal tooth AN936A416 (88044)														
6	1	Ch FSN in col 2 and delete mfr part No. and code in col 3	M	O		4720-202-6946	Group 04-Hose Assembly, Inflator Valve, and Fittings Hose Assembly: Discharge														
	2	Add col 1 and 2, and ch col 3	P	O		4720-541-8358	Manufacture from: Hose, Rubber: 25 ft required for each hose ORTAC11 (73842)	FT	50	*	*	*	*								
	3	Add col 1, 2, 4, 6 and 7, ch col 3	P	O		4730-278-2065	Clamp, hose 24 (66295)	EA	4	*	*	*	*								
	4	Add col 1, 2, 4, 6 and 7, ch col 3	P	O		4730-069-9075	Nipple D006-012 (72661)	EA	4	*	*	*	*	2							
	5	Add col 1, 2, 4, 6 and 7, ch col 3	P	O		4730-243-1640	Coupling, half, quick disconnect AM13 (72661)	EA	2	*	*	*	*								
	6	Add col 1, 2, 4, 6 and 7, ch col 3	P	O		5330-505-6186	Washer, non-metallic AWS6 (72661)	EA	6	*	*	*	*	2							

Page	Line	Action	(1) SMR code Index No.	(2) Federal stock number	(3) Description Reference No. & mfr. code Usable on code	(4) Unit of issue	(5) Qty inc in unit pack	(6) Qty inc in unit	(7) 30-day DS maint allowance			(8) 30-day GS maint allowance			(9) 1-yr alw per 100 equip cntgcy	(10) Depot maint alw- per 100 equip	(11) Illustration	
									(a)	(b)	(c)	(a)	(b)	(c)			(a) Fig No.	(b) Item No.
									1-20	21-50	51-100	1-20	21-50	51-100				
					Section V --- Repair Parts for DS, GS, and Depot Maintenance Group 01 --- Frame, Engine, Fuel Tank, Toolbox, Wheel													
8	4	Add mfr P/N and code in col 3		5310-881-9369	NUT, WING: Filter, ¼-20 thd size MIL-S-5059 (96906)													
	10	Ch col 3		5305-543-2224	SCREW, MACHINE: Toolbox mtg and gas tank, ¼-20 thd size, ½ in. lg MS35223-79 (96906)													
	11	Ch col 3		5310-167-0719	WASHER, LOCK: Toolbox mtg and gas tank, ¼ in screw size, internal tooth AN936A416 (88044)													
9	10	Ch FSN in col 2		2920-065-6603	ROTOR, DRIVER 8384 (09027) Group 02---Blower Assembly													
12	1	Ch FSN in col 2		2920-065-6602	COVER, GEAR END 8658 (09027)													
	6	Add FSN in col 2		5304-057-7204	SHIM: Timing gear, 0.002 in. thk 8527 (09027)													
	7	Add FSN in col 2		5340-057-7190	SHIM: Timing gear, 0.010 in. thk 8529 (09027)													
	11	Ch mfr part No. in col 3		3110-554-5826	BEARING, BALL: Gear end, double roll 5204 (43334) Group 03 --- Coupling Assembly													
	1	Ch mfr part No. and code in col 3		4310-106-5542	COUPLING ASSEMBLY 4MV6 (98182)													

Page	Line	Action	(1) SMR code Index No.	(2) Federal stock number	(3) Description Reference No. & mir. code	(4) Unit of issue	(5) Qty inc in unit pack	(6) Qty inc in unit	(7) 30-day DS maint allowance			(8) 30-day GS maint allowance			(9) 1-yr alw per 100 equip cntgcy	(10) Depot maint alw- per 100 equip	(11) Illustration	
									(a)	(b)	(c)	(a)	(b)	(c)			(a)	(b)
									1-20	21-50	51-100	1-20	21-50	51-100			Fig No.	Item No.
					Group 03-Coupling Assembly (Cont'd)													
13	4	Ch mfr code in col 3			BODY, COUPLING: Compressor side 4MV6-3 (98182)													
					Group 04-Hose Assmby, Inflator Valve, and Fitting													
	1	Ch FSN in col 2, and de- lete mfr part No. and code in col 3	MO	4720-202-6946	Hose Assembly: Discharge													
					Manufacture From:													
	2	Add col 1, 2, 4, 6, 7, 8, 9 and 10, ch col 3	PO	4720-541-8358	Hose Rubber: 25 ft required for each hose ORTAC11 (73842)	FT	50	•	•	•	•	•	•	150	500			
	3	Add col 1, 2, 4, 6, 7, 8, 9 and 10, ch col 3	PO	4730-278-2065	Clamp, Hose 24 (66295)	EA	4	•	•	•	•	•	•	4	•			
	4	Add col 1, 2, 4, 6, 7, 8, 9 and 10, ch col 3	PO	4730-069-9075	Nipple D006-012 (72661)	EA	4	2	2	4	2	2	4	44	40			
	5	Add col 1, 2, 4, 6, 7, 8, 9 and 10, ch col 3	PO	4730-243-1640	Coupling, half, quick disconnect AM13 (72661)	EA	2	•	•	2	•	•	2	10	15			
14	1	Add col 1, 2, 4, 6, 7, 8, 9 and 10, ch col 3	PO	5330-505-6186	Washer, non-metallic AWS6 (72661)	EA	6	2	2	4	2	2	4	50	100			

By Order of the Secretary of the Army:

W. C. WESTMORELAND,
General, United States Army.
Chief of Staff

Official:

KENNETH G. WICKHAM,
Major General, United States Army,
The Adjutant General

Distribution:

To be distributed in accordance with DA Form 12-25, Section I, (qty rqr block no. 30) organizational maintenance requirements for Air Compressors, 60 CFM.

TECHNICAL MANUAL }
 No. 5-4310-278-25P }

HEADQUARTERS
 DEPARTMENT OF THE ARMY
 WASHINGTON, D.C., 14 February 1969

**ORGANIZATIONAL, DIRECT AND GENERAL SUPPORT, AND DEPOT
 MAINTENANCE REPAIR PARTS AND SPECIAL TOOLS LISTS**

**COMPRESSOR, ROTARY: AIR; FRAME MOUNTED, 2 WHEEL
 PNEUMATIC TIRED, GASOLINE ENGINE, 60 CFM, 6.5 PSI
 (HARRIS MODEL 4MV) FSN 4310-935-5345**

Current as of 20 January 1969

	Paragraph	Page
SECTION I.	INTRODUCTION	
	Scope -----	1 iii
	General -----	2 iii
	Explanation of columns -----	3 iii
	Special information -----	4 v
	How to locate repair parts -----	5 v
	Abbreviations -----	6 v
	Federal supply codes for manufacturers -----	7 vi
	Recommendations for maintenance publications improvements -----	8 vi
II.	PRESCRIBED LOAD ALLOWANCE -----	vii
III.	REPAIR PARTS FOR ORGANIZATIONAL MAINTENANCE -----	1
Group 01.	Frame, Engine, Fuel Tank, Tool Box, Wheel -----	1
02.	Blower Assembly -----	4
03.	Coupling Assembly -----	5
04.	Hose Assembly, Inflator, Valve and Fittings -----	6
05.	Fuel Filter Assembly -----	6
SECTION IV.	SPECIAL TOOLS, TEST AND SUPPORT EQUIPMENT FOR ORGANIZATIONAL MAINTENANCE (NOT APPLICABLE)	
V.	REPAIR PARTS FOR DS, GS, AND DEPOT MAINTENANCE	
Group 01.	Frame, Engine, Fuel Tank, Tool Box, Wheel -----	7
02.	Blower Assembly -----	11
03.	Coupling Assembly -----	12
04.	Hose Assembly, Inflator, Valve and Fittings -----	13
05.	Fuel Filter Assembly -----	14
SECTION VI.	SPECIAL TOOLS, TEST AND SUPPORT EQUIPMENT FOR DS, GS, AND DEPOT MAINTENANCE (NOT APPLICABLE)	
SECTION VII.	FEDERAL STOCK NUMBER AND REFERENCE NUMBER INDEX -----	21

SECTION I.

INTRODUCTION

1. Scope

This manual lists repair parts, special tools and test and support equipment required for the performance of organizational, direct support, general support, and depot maintenance of the compressor.

2. General

This Repair Parts and Special Tools List is divided into the following sections:

a. Prescribed Load Allowance (PLA)—Section II. A composite listing of repair parts, special tools, test and support equipment having quantitative allowances for initial stockage at the organizational level.

b. *Repair Parts—Section III.* A list of repair parts authorized for the performance of maintenance at the organizational level in figure and item number sequence.

c. *Special Tools, Test and Support Equipment—Section IV.* A list of special tools, test and support equipment authorized for the performance of maintenance at the organizational level. Not applicable.

d. *Repair Parts—Section V.* A list of repair parts authorized for the performance of maintenance at the direct support, general support, and depot level in figure and item number sequence.

e. *Special Tools, Test and Support Equipment—Section VI.* A list of special tools, test and support equipment authorized for the performance of maintenance at the direct support, general support, and depot level. Not applicable.

f. *Federal Stock Number and Reference Number Index—Section VII.* A list of Federal stock numbers in ascending numerical sequence, followed by a list of reference numbers appearing in all of the listings, in ascending alpha-numeric sequence, cross-referenced to the illustration figure number and item number.

Note. Items not illustrated are cross-referenced to group number.

3. Explanation of Columns

The following provides an explanation of columns in the tabular lists in Sections II through VII:

Note. Common hardware items known to be readily available in Army supply channels are assigned Maintenance codes only. Source codes, Recoverability codes, and Maintenance Allowances are not assigned this category.

a. *Source, Maintenance, and Recoverability Codes (SMR).*

(1) *Source Code.* Indicates the selection status and source for the listed item. Source codes used are:

Code	Explanation
P	Applied to repair parts which are stocked in or supplied from DSA/GS4 or Army supply system, and authorized for USC at indicated maintenance categories.
P2	Applied to repair parts which are procured and stocked for insurance purposes because the combat or military essentiality of the end item dictates that a minimum quantity be available in the supply system.
M	Applied to repair parts which are not procured or stocked but are to be manufactured at indicated maintenance categories.
A	Applied to assemblies which are not procured or stocked as such but are made up of two or more units, each of which carry individual stock numbers and descriptions and are procured and stocked and can be assembled by units at indicated maintenance categories.
X	Applied to parts and assemblies which are not procured or stocked; the mortality of which normally is below that of the applicable end item; and the failure of which should result in retirement of the end item from the supply system.
X1	Applied to repair parts which are not procured or stocked. the requirement for which will be supplied by use of the next higher assembly or component.
X2	Applied to repair parts which are not stocked. The indicated maintenance category requiring such repair parts will attempt to obtain them through cannibalization; if not obtainable through cannibalization, such repair parts will be requisitioned with supporting justification through normal supply channels.
C	Applied to repair parts authorized for local procurement. If not obtainable from local procurement, such repair

<i>Code</i>	<i>Explanation</i>
	parts will be requisitioned through normal supply channels with a supporting statement of nonavailability from local procurement.
G	Applied to major assemblies that are procured with PEMA (Procurement Equipment Missile Army) funds for initial issue only to be used as exchange assemblies at DSU and GSU maintenance level. These assemblies will not be stocked above DSU and GSU level or returned to depot level.

(2) *Maintenance Code*. Indicates the lowest category of maintenance authorized to install the listed item. The maintenance codes are:

<i>Code</i>	<i>Explanation</i>
O _ _ _ _	Organizational maintenance
F _ _ _ _	Direct support maintenance
H _ _ _ _	General support maintenance
D _ _ _ _	Depot maintenance

(3) *Recoverability Code*. Indicates whether unserviceable items should be returned for recovery or salvage. Items not coded are expendable. Recoverability codes are:

<i>Code</i>	<i>Explanation</i>
R	Applied to repair parts and assemblies which are economically repairable at DSU and GSU activities and which are normally furnished by supply on an exchange basis.
S	Applied to repair parts and assemblies which are economically repairable at DSU and GSU activities and which normally are furnished by supply on an exchange basis. When items are determined by a GSU to be uneconomically repairable, they will be evacuated to a depot for evaluation and analysis before final disposition.
T	Applied to high dollar value recoverable repair parts which are subject to special handling and are issued on an exchange basis. Such repair parts are normally repaired or overhauled at depot maintenance activities.
U	Applied to repair parts specifically selected for salvage by reclamation units because of precious metal content, critical materials, high dollar value reusable casings or castings.

b. Federal Stock Number. Indicates the Federal stock number assigned to the item and will be used for requisitioning purposes.

c. Description. Indicates the Federal item name and any additional description of the item required. Assembly components and subassemblies are indented under major assemblies. A part number or other reference number is followed by the applicable five-digit Federal supply code for manufacturers in parenthesis. Repair

parts quantities included in kits and sets are shown in front of the repair part name.

d. Unit of Measure (U/M). A 2-character alphabetic abbreviation indicating the amount or quantity of the item upon which the allowances are based, e.g., ft, ea, pr, etc.

e. Quantity Incorporated in Unit. Indicates the quantity of the item used in the functional group or the assembly group. A V appearing in this column in lieu of a quantity indicates that a definite quantity cannot be indicated (e.g., shims, spacers, etc.).

f. Fifteen-Day Organizational Maintenance Allowance.

(1) The allowance columns are divided into four subcolumns. Indicated in each subcolumn opposite the first appearance of each item is the total quantity of the items authorized for the number of equipments supported. Subsequent appearances of the same item will have the letters "REF" in the allowance columns. Items authorized for use as required but not for initial stockage are identified with an asterisk in the allowance column.

(2) The quantitative allowances for organizational level of maintenance represents one initial prescribed load for a 15-day period for the number of equipments supported. Units and organizations authorized additional prescribed loads will multiply the number of prescribed loads authorized by the quantity of repair parts reflected in the appropriate density column to obtain the total quantity of repair parts authorized.

(3) Organizational units providing maintenance for more than 100 of these equipments shall determine the total quantity of parts required by converting the equipment quantity to a decimal factor by placing a decimal point before the next to last digit of the number to indicate hundredths, and multiplying the decimal factor by the parts quantity authorized in the 51-100 allowance column. Example, authorized allowance for 51-100 equipments is 12; for 140 equipments multiply 12 by 1.40 or 16.80 rounded off to 17 parts required.

(4) Subsequent changes to allowances will be limited as follows: No change in the range of items is authorized. If additional items are considered necessary, recommendation should be forwarded to the U.S. Army Mobility Equipment Command for exception or revision to the allowance list. Revisions to the range of items authorized will be made by the U.S. Army Mobility Equipment Command based upon engineering experience, demand data, or TAERS information.

g. Thirty-Day DS/GS Maintenance Allowances.

(1) The allowance columns are divided into three subcolumns. Indicated in each subcolumn, opposite the first appearance of each item, is the total quantity of items authorized for the number of equipments supported. Subsequent appearances of the same item will have the letters "REF" in the applicable allowance columns. Items authorized for use as required but not for initial stockage are identified with an asterisk, in the allowance column.

(2) The quantitative allowances for DS/GS levels of maintenance will represent initial stockage for a 30-day period for the number of equipments supported.

(3) Determination of the total quantity of parts required for maintenance of more than 100 of these equipments can be accomplished by converting the equipment quantity to a decimal factor by placing a decimal point before the next to the last digit of the number to indicate hundredths, and multiplying the decimal factor by the parts quantity authorized in the 51-100 allowance column. Example, authorized allowance for 51-100 equipments is 40; for 150 equipments multiply 40 by 1.50 or 60 parts required.

h. One-Year Allowance Per 100 Equipments/Contingency Planning Purposes. Indicates opposite the first appearance of each item the total quantity required for distribution and contingency planning purposes. The range of items indicates total quantities of all authorized items required to provide for adequate support of 100 equipments for one year.

i. Depot Maintenance Allowance Per 100 Equipments. Indicates opposite the first appearance of each item the total quantity authorized for depot maintenance of 100 equipments. Subsequent appearances of the same item will have the letters "REF" in the allowance column. Items authorized for use as required but not for initial stockage are identified with an asterisk in the allowance column.

j. Illustration.

(1) *Figure Number.* Indicates the figure number of the illustration in which the item is shown.

(2) *Item Number.* Indicates the callout number used to reference the item in the illustration.

4. Special Information

a. Repair parts mortality has been based on 1200 hours operation per year.

b. Parts which require manufacture or assembly at a category higher than that authorized for installation will indicate in the source column the higher category.

c. The following publications pertain to the compressor and its components:

LO 5-4310-278-12 Lubrication Order
 TM 5-2805-267-14 Operator, Organizational, Direct Support and General Support Maintenance Manual

TM 5-4310-278-15 Operator, Organizational, Direct Support, General Support and Depot Maintenance Manual

5. How to Locate Repair Parts

a. When Federal Stock Number or Reference Number is Unknown:

(1) *First.* Using the table of contents determine the functional group, functional subgroup, or assembly group within which the repair part belongs. This is necessary since illustrations are prepared for functional groups, functional subgroups or assembly groups, and listings are divided into the same groups.

(2) *Second.* Find the illustration covering the functional group, functional subgroup, or assembly group to which the repair part belongs.

(3) *Third.* Identify the repair part on the illustration and note the illustration figure and item number of the repair part.

(4) *Fourth.* Using the Repair Parts Listing, find the functional group, functional subgroup, or assembly group to which the repair part belongs and locate the illustration figure and item number noted on the illustration.

b. When Federal Stock Number or Reference Number is Known:

(1) *First.* Using the Index of Federal Stock Numbers and Reference Numbers find the pertinent Federal stock number or reference number. This index is in ascending FSN sequence followed by a list of reference numbers in alphanumeric sequence, cross-referenced to the illustration figure number and item number.

(2) *Second.* Using the Repair Part Listing, find the functional group, functional subgroup, or assembly group of the repair part and the illustration figure number and item number referenced in the Index of Federal Stock Numbers and Reference Numbers.

6. Abbreviations

ea	-----	each
id	-----	inside diameter(s)
in.	-----	inch (es)
lg	-----	long (length)
mtg	-----	mounting (9)
No.	-----	number
npt	-----	National Pipe Thread

ref
thd
thk

reference
thread (s) (ed)
thick (ness)

7. Federal Supply Codes for Manufacturers

<i>Codes</i>	<i>Manufacturers</i>
03924	Stratoflex, Inc.
09027	M-D Blowers, Inc.
22492	Brown and Wiley, Inc.
43334	New Departure-Hyatt Bearings Division General Motors Corp.
53477	Schraders, A. and Son Division of Scovill Mfg. Co.
70270	Alemite Corp.
72582	Detroit Diesel Engine Division of General Motors Corp.
72661	Dixon Valve and Coupling Co.
73134	Heim Universal Corp.
73370	Fram Corp.
73808	General Tire and Rubber Co.
73842	Goodyear Tire and Rubber Co.
75665	Lovejoy Flexible Coupling Co.
76786	North and Judd Mfg. Co.
77250	Pheoll Mfg. Co.

78189	Shakeproof Division of Illinois Tool Works Inc.
79136	Waldes Kohinoor, Inc.
80201	Chicago Rawhide Mfg. Co.
81348	Federal Specification Promulgated by General Service Administration
88044	Aeronautical Standard Group Dept. of Navy and Air Force
96906	Military Standards
97403	Army Engineer Research and Develop- ment Laboratories
98182	Harris Equipment Corp.

8. Recommendations for Maintenance Publication Improvements

Report of errors, omissions, and recommenda-
tions for improving this publication by the user
is encouraged. Reports should be submitted on
DA Form 2028 (Recommended Changes to DA
Publications) and forwarded direct to Command-
ing General, U.S. Army Mobility Equipment
Command, ATTN: AMSME-MPP, 4300 Good-
fellow Boulevard, St. Louis, Mo. 63120.

SECTION II.
PRESCRIBED LOAD ALLOWANCE

(1) Federal stock number	(2) Description usable on code	(3) 15-day org maint. alw			
		(A) 1-5	(B) 6-20	(C) 21-50	(D) 51-100
	The following items w/allowances are applicable to compressor, rotary: Air; Frame Mounted, 2 Wheel Pneumatic Tired, Gasoline Engine, 60 CFM, 6.5 PSI (Harris Model 4MV)				
	GROUP 01-FRAME, ENGINE, FUEL TANK, TOOL BOX, WHEEL				
2910-892-2984	ELEMENT FILTER	2	2	4	8
	GROUP 04-HOSE ASSEMBLY, INFLATOR VALVE, AND FITTINGS				
4310-690-3486	VALVE, INFLATOR				2
	GROUP 05-FUEL FILTER ASSEMBLY				
2910-087-3612	GASKET: filter bowl				2
2919-905-9792	FILTER ASSEMBLY				2

(1) SMR CODE	(2) FEDERAL STOCK NUMBER	(3) DESCRIPTION REFERENCE NO. 6 MFR. CODE USABLE ON CODE	(4) UNIT OF ISSUE	(5) QTY INC IN UNIT PACK	(6) QTY INC IN UNIT	(7) IS-DAY ORGANIZATIONAL MAINTENANCE ALW				(8) ILLUS- TRATION	
						(a)	(b)	(c)	(d)	FIG NO.	ITEM NO.
						1-5	6-20	21-50	51-100		
		SECTION III - REPAIR PARTS FOR ORGANIZATIONAL MAINTENANCE									
		GROUP 01 - FRAME, ENGINE, FUEL TANK, TOOL BOX, WHEEL									
P20	4310-567-1596	COUPLING, HALF: DEAD END AMO (72661)	EA		2	*	*	*	*	1	1
P 0	5330-505-6186	WASHER, MN-METALLIC: COUPLING AWS6 (72661)	EA		2	*	2	2	2	1	2
P 0	4730-496-5954	COUPLING, HALF, QUICK DISCONNECT: MALE AM12 (72661)	EA		2	*	*	*	*	1	3
P 0	5330-505-6186	WASHER, NON-METALLIC: COUPLING AWS6 (72661)	EA		2	REF	REF	REF	REF	REF	REF
0	4730-129-9053	ELBOW, PIPE: MALE COUPLING MTG, 1 IN.	EA		1					1	4
0	4730-196-1469	NIPPLE, PIPE: ELBOW TO REDUCER, 1 IN.	EA		2					1	5
0	4730-196-0847	BUSHING, PIPE, REDUCER: COUPLING TO MANIFOLD, 1 1/2 TO 1 IN.	EA		3					1	6
P20	4730-106-5531	MANIFOLD 4MV35 (98182)	EA		1	*	*	*	*	1	7
0	4730-555-1761	NIPPLE, PIPE: MANIFOLD TO COMPRESSOR, 1 1/2 IN. NPT	EA		1					1	8
P20	4730-106-4382	ELBOW, PIPE: TUBE TO MANIFOLD, 1/8 IN. NPT, 1/4 IN. TUBE 2MV11A22 (98182)	EA		1	*	*	*	*	1	9
P20	4310-785-3460	REGULATOR ASSEMBLY: AIR PRESSURE 2MV11A (98182)	EA		1	*	*	*	*	1	10
P20	4730-106-4381	ADAPTER, TUBING: TUBE TO REGULATOR, 1/4 IN. NPT, 1/4 IN. TUBE 2MV11A20 (98182)	EA		1	*	*	*	*	1	11
P20	4730-106-5529	TUBE ASSEMBLY: REGULATOR, 1/4 IN. DIA 12 IN. LG, COPPER 2MV11A21 (98182)	EA		1	*	*	*	*	1	12
0	5305-269-3211	SCREW, CAP, HEXAGON HEAD: COMPRESSOR MTG, 5/16-18 THD SIZE, 1 IN. LG MS35297-60 (96906)	EA		2					1	13

(1) SMR CODE	(2) FEDERAL STOCK NUMBER	(3) DESCRIPTION REFERENCE NO. & MFR. CODE USABLE ON CODE		(5) QTY INC IN UNIT PACK	(6) QTY INC IN UNIT	(7) 15-DAY ORGANIZATIONAL MAINTENANCE ALW				(8) ILLUS- TRATION	
						(a) 1-5	(b) 6-20	(c) 21-50	(d) 51-100	(a) FIG NO.	(b) ITEM NO.
P20	4310-106-4380	FILTER ASSEMBLY: AIR 4MV45-3 (98182)		EA	1	*	*	*	*	1	14
P0	2910-892-2984	ELEMENT, FILTER CA73PL (73370)		EA	1	2	*	4	8	1	15
P20	4310-106-4379	BONNET, FILTER 4MV45-1 (98182)		EA	1	*	*	*	*	1	16
0	5310-881-9369	NUT, WING: FILTER, 1/4-20 THD SIZE		EA	1					1	17
X20		FRAME: ENGINE AND COMPRESSOR 4MV32 (98182)		EA	1					1	18
X20		BOX, TOOL 4MV9 (98182)		EA	1					1	19
0	5305-014-5379	SCREW, DRIVE: PLATE MTG, No. 4, 3/16 IN. LG		EA	8					1	21
X20		PLATE, INSTRUCTION 4MV70 (98182)		EA	1					1	22
0	5305-543-2224	SCREW, MACHINE: TOOL BOX MTG, 1/4-20 THD SIZE, 1/2 IN. LO MS35223-79 (96906)		EA	8					1	23
0	5310-167-0719	WASHER, LOCK: TOOL BOX MTG, 1/4 IN. SCREW SIZE, INTERNAL TOOTH AN936A416 (88044)		EA	8					1	24
0	5310-012-0377	NUT, PLAIN, HEXAGON: SUPPORT MTG, 5/16-18 THD SIZE MS35690-605 (96906)		EA	10					1	25
0	5310-637-9541	WASHER, LOCK: 5/16 IN. SCREW SIXE, INTERNAL EXTERNAL TOOTH MS35338-46 (96906)		EA	10					1	26
X20		SUPPORT, COMPRESSOR 4MV8A (98182)		EA	1					1	27
X20		SHOCK MOUNT 3MV10 (98182)		EA	4					1	28

(1) SMR CODE	(2) FEDERAL STOCK NUMBER	(3) DESCRIPTION REFERENCE NO. & MFR. CODE USABLE ON CODE	(4) UNIT OF ISSUE	(5) QTY INC IN UNIT PACK	(6) QTY INC IN UNIT	(7) 15-DAY ORGANIZATIONAL MAINTENANCE ALW				(8) ILLUS- TRATION	
						(a)	(b)	(c)	(d)	(a)	(b)
						1-5	6-20	21-50	51-100	FIG NO.	ITEM NO.
M 0		LINE ASSEMBLY: FUEL MANUFACTURE FROM: HOSE, RUBBER: 18 IN. REQUIRED, STOCK No. 4720-142-1370	EA		1					1	29
P20	4730-106-5532	ADAPTER: FUEL LINE 4MV39 (98182)	EA		2	*	*	*	*	1	30
P20	4730-106-5533	FUEL LINE: SUCTION 4MV40 (98182)	EA		1	*	*	*	*	1	31
P20	2910-106-1987	TANK ASSEMBLY: FUEL 4MV75 (98182)	EA		1	*	*	*	*	1	32
P20	2910-106-1985	CAP. FUEL TANK 4MV76 (98182)	EA		1	*	*	*	*	1	33
P20	2910-106-1986	STRAINER: FUEL TANK 4MV77 (98182)	EA		1	*	*	*	*	1	31
0	4730-278-3389	PLUG: TANK DRAIN 1/4 IN. PIPE THD 5154453 (72582)	EA		1					1	35
0	5340-298-6563	RING, RETAINING: HUB 5100-62 (79136)	EA		4	*	*	*	*	1	36
P20	2530-106-5527	HUB, WHEEL GC1484 (73808)	EA		2	*	*	*	*	1	37
X20		BEARING, WHEEL RF10-22-14 (73134)	EA		4					1	38
0	2610-174-1792	TUBE ZZT410 (81348)	EA		2	*	*	*	*	1	39
0	2610-528-9697	TIRE MS35389-40 (96906)	EA		2	*	*	*	*	1	40
0	5306-018-1333	BOLT, MACHINE: WHEEL, 5/16 -24 THD SIZE, 5/8 IN. LG MS35296-31 (96906)	EA		8					1	41
0	5310-655-9684	NUT, PLAIN, HEXAGON: WHEEL, 5/16-21 (THD SIZE, SELF-LOCKING MS35691-525 (96906)	EA		8					1	42

(1) SMR CODE	(2) FEDERAL STOCK NUMBER	(3) DESCRIPTION REFERENCE NO. & MFR. CODE	(4) UNIT OF ISSUE	(5) QTY INC IN UNIT PACK	(6) QTY INC IN UNIT	(7) 15-DAY ORGANIZATIONAL MAINTENANCE ALW				(8) ILLUS- TRATION	
						(a)	(b)	(c)	(d)	(a)	(b)
						1-5	6-20	21-50	51-100	FIG NO.	ITEM NO.
0	5310-582-5965	WASHER, LOCK: ENGINE AND COMPRESSOR MTG, 1/4 IN. SCREW SIZE MS35338-44 (96906)	EA		12					1	43
0	5305-068-0501	SCREW, CAP. HEXAGON HEAD: ENGINE AND COMPRESSOR MTG, 1/4-20 THD SIZE, 3/4 IN. LG MS35297-5 (96906)	EA		12					1	44
X20		BRACKET, RIGHT SIDE: ENGINE 4MV20 (98182)	EA		1					1	45
X20		STRAP, GROUND 4MVBS (98182)	EA		1					1	46
P O T	2805-072-4871	ENGINE ASSEMBLY, GASOLINE 2A016-3 (97403)	EA		1	*	*	*	*	1	47
X20		BRACKET, LEFT SIDE: ENGINE 4MV21 (98182)	EA		1					1	48
X20		CHAIN, COUPLING: 30 IN. LG 4MV18 (98182)	EA		1					1	49
		GROUP 02 - BLOWER ASSEMBLY									
P O R	1730-055-6433	BLOWER, ROTARY 11-3202-5-378 (09027)	EA		1	*	*	*	*	2	
P20	4730-826-6465	FITTING, RELIEF: END PLATE 1/8 IN. NPT MS35670-2 (96906)	EA		2	*	*	*	*	2	12
0		PLUG, PIPE: END PLATE, 1/8 IN. NPT, SQUARE HEAD H6103 (09027)	EA		2					2	13
X20		GAGE, OIL LEVEL: END PLATE, 1/2 IN. NPT 91143 (09027)	EA		2						
0		KEY: DRIVE END, 3/16 IN. SQUARE, 7/8 IN. LG 8598 (09027)	EA		1					2	19
X20		PLUG, PIPE: DRAIN, 1/8-27 NPT, MAGNETIC 90227 (09027)	EA		2					2	21

(1) SMR CODE	(2) FEDERAL STOCK NUMBER	(3) DESCRIPTION		(4) UNIT OF ISSUE	(5) QTY INC IN UNIT PACK	(6) QTY INC IN UNIT	(7) 15-DAY ORGANIZATIONAL MAINTENANCE ALW				(8) ILLUS- TRATION	
							(a) 1-5	(b) 6-20	(c) 21-50	(d) 51-100	(a) FIG NO.	(b) ITEM NO.
		REFERENCE NO. & MFR. CODE	USABLE ON CODE									
P20	4310-106-5542	GROUP 03 -COUPLING ASSEMBLY		EA		1	*	*	*	*	3	
X1		COUPLING ASSEMBLY 4MV6 (98182)		EA		1					3	1
X1		BUSHING: ENGINE SIDE 4MV6-1 (98182).		EA		1					3	2
P 0	4310-106-5543	BODY, COUPLING: ENGINE SIDE 4MV6-4 (98182)		EA		1	*	*	*	*	3	3
0	5305-225-7766	SPIDER: COUPLING 4MV6-2 (98182)		EA		1					3	3
		SCREW, MACHINE: COUPLING, NO. 10-32 THD SIZE 1 1/4 IN. LG, SOCKET HEAD M624673-13 (96906)		EA		3					3	4
X1		BODY, COUPLING: COMPRESSOR SIDE 4MV6-3 (98183)		EA		1					3	5
0	5306-0180-1608	BOLT, MACHINE: COMPRESSOR TO PLATE, 5/16-18 THD SIZE, 1 IN. LG MS35298-34 (96906)		EA		4					3	6
0		SCREW, MACHINE: PLATE TO ENGINE, 1/4-20 THD SIZE 3/4 IN. LG MS24668-20 (96906)		EA		4					3	7
0	5310-407-9566	WASHER, LOCK: COMPRESSOR TO PLATE MS5338-45 (96906)		EA		4					3	8
0	5310-012-0368	NUT, PLAIN, HEXAGON: COMPRESSOR TO PLATE MS35690-525 (96906)		EA		4					3	9
X20		TRANSITION PLATE AND ADAPTER: COMPRESSOR TO ENGINE 4MV50-251 (98182)		EA		1					3	10

(1) SMR CODE	(2) FEDERAL STOCK NUMBER	(3) DESCRIPTION REFERENCE NO. & MFR. CODE USABLE ON CODE	(4) UNIT OF ISSUE	(5) QTY INC IN UNIT PACK	(6) QTY INC IN UNIT	(7) 15-DAY ORGANIZATIONAL MAINTENANCE				(8) ILLUS- TRATION	
						(a)	(b)	(c)	(d)	(a)	(b)
						1-5	6-20	21-54	51-100	FIG NO.	ITEM NO.
		GROUP 04 - HOSE ASSEMBLY, INFLATOR VALVE, AND FITTINGS									
M0	4720-202-6846	HOSE ASSEMBLY: DISCHARGE 2MV33 (98182) MANUFACTURE FROM: HOSE, RUBBER: 25 FT REQUIRED FOR EACH HOSE, STOCK NO. 4720-541-8358 CLAMP, HOSE: 4 EACH, STOCK NO. 4730-278-2065 NIPPLE: 4 EACH, STOCK NO. 4730-069-9075 COUPLING, HALF, QUICK DISCONNECT: 2 EACH, STOCK No. 4730-243-1640 WASHER, NON-METALLIC: 2 EACH, STOCK No. 5330-505-6186	EA		2					4	
										4	1
										4	2
										4	3
										4	4
										4	5
0	4730-945-7092	ADAPTER, HOSE: HOSE TO INFLATOR C1280-3A1 (22492)	EA		2	*	*	*	*	4	6
PO	4310-690-3486	VALVE, INFLATOR 9927 (53477)	EA		2	*	*	*	2	4	7
X20		STRAP, HOSE RETAINING 2MV32 (98182)	EA		2					4	8
0	5340-515-1157	CLIP, HOSE STRAP 02300 (78786)	EA		2					4	9
		GROUP 05 - FUEL FILTER ASSEMBLY									
PO	2910-905-9792	FILTER ASSEMBLY: FUEL MS51086-1 (96906)	EA		1	*	*	*	2	5	1
PO	2910-087-3612	GASKET: FILTER BOWL MS51091-4 (96906)	EA		1	*	*	*	2	5	2

(1) SMR CODE	(2) FEDERAL STOCK NUMBER	(3) DESCRIPTION REFERENCE NO. & MFR. CODE USABLE ON CODE		(4) UNIT OF ISSUE	(5) QTY INC IN UNIT PACK	(6) QTY INC IN UNIT	(7) 30-DAY DS MAINT ALLOWANCE			(8) 30-DAY GS MAINT ALLOWANCE			(9) 1-YR ALW PER 100 EQUIP CNTGCTY	(10) DEPOT MAINT ALW- PER 100 EQUIP	(11) ILLUS- TRATION		
							(a)	(b)	(c)	(a)	(b)	(c)			(a)	(b)	
							1-20	21-50	51-100	1-20	21-50	51-100			FIG NO.	ITEM NO	
		SECTION V - REPAIR PARTS FOR DS, GS, AND DEPOT MAINTENANCE															
		GROUP 01 - FRAME, ENGINE, FUEL TANK, TOOL BOX, WHEEL															
P20	4310-567-1596	COUPLING, HALF: DEAD END AMO (72661)		EA		2	*	*	*	*	*	*	4	*	1	1	
P0	5330-505-6186	WASHER, NON-METALLIC: COUPLING AWS6 (72661)		EA		2	2	2	4	2	2	4	50	100	1	2	
P0	4730-496-5954	COUPLING, HALF, QUICK DISCONNECT: MALE		EA		2	*	*	2	*	*	2	10	20	1	3	
P0	5330-505-6186	WASHER, NON-METALLIC: COUPLING AWS6 (72661)		EA		2	REF	REF	REF	REF	REF	REF	REF	REF	REF	REF	
0	4730-129-9053	ELBOW, PIPE: MALE COUPLING MTD, 1 IN.		EA		1									1	4	
0	4730-196-1469	NIPPLE, PIPE: ELBOW TO REDUCER, IN.		EA		2									1	5	
0	4730-196-0847	BUSHING, PIPE, REDUCER: COUPLING TO MANIFOLD, 1 1/2 TO 1 IN.		EA		3									1	6	
P20	4730-106-5531	MANIFOLD 4MV35 (98182)		EA		1	1	1	1	1	1	1	3	*	1	7	
0	4730-555-1767	NIPPLE, PIPE: 1/2 MANIFOLD TO COMPRESSOR, 1 1/2 IN. NPT		EA		1									1	8	
P20	4730-106-4382	ELBOW, PIPE: TUBE TO MANIFOLD, 1/8 IN. NPT, 1/4 IN. TUBE 2MV11A22 (98182)		EA		1	*	*	*	*	*	*	2	*	1	9	
P20	4310-785-3460	REGULATOR ASSEMBLY: AIR PRESSURE 2MV11A (98182)		EA		1	*	*	*	*	*	*	5		1	10	
P20	4730-106-4381	ADAPTER, TUBING: TO REGULATOR, 1/4 IN. NPT, 1/4 IN. TUBE 2MV11A20 (98182)		EA		1	*	*	*	*	*	*	2	*	1	11	
P20	4730-106-5529	TUBE ASSEMBLY: REGULATOR, 1/4 IN. DIA 12 IN. LG, COPPER 2MV11A21 (98182)		EA		1	*	*	*	*	*	*	2	*	1	12	
0	5305-269-3211	SCREW, CAP, HEXAGON HEAD: COMPRESSOR MTG, 5/16-18 THD SIZE, 1 IN. LG MS35297-60 (96906)		EA		2									1	13	

(1) SMR CODE	(2) FEDERAL STOCK NUMBER	(3) DESCRIPTION REFERENCE NO. & MFR. CODE USABLE ON CODE	(4) UNIT OF ISSUE	(5) QTY INC IN UNIT PACK	(6) QTY INC IN UNIT	(7) 30-DAY DS MAINT ALLOWANCE			(8) 30-DAY GS MAINT ALLOWANCE			(9) 1-YR ALW PER 100 EQUIP CNTGCT	(10) DEPOT MAINT ALW- PER 100 EQUIP	(11) ILLUS- TRATION	
						(a)	(b)	(c)	(a)	(b)	(c)			(a)	(b)
						1-20	21-50	51-100	1-20	21-50	51-100			FIG NO.	ITEM NO.
F		SET SCREW: OIL SLINGER, 1/4-20 THD SIZE., 1/4 IN. LG 90457 (09027)	EA		1									2	6
P F	5330-948-7140	SEAL, OIL: DRIVE SHAFT 16024M1 (80201)	EA		1	*	*	2	*	*	2	6	100	2	7
P2F	4310-109-3437	SLINGER, OIL 8488 (09027)	EA		1	*	*	*	*	*	*	2	*	2	8
P F	3110-144-8510	BEARING, BALL: DRIVE END 3204 (43334)	EA		2	*	2	2	*	2	2	12	200	2	9
P F	5330-948-7141	SEAL: ROTOR SHAFT 16030M1 (80201)	EA		5	2	2	2	2	2	2	24	400	2	10
P2F	4310-106-5541	PLATE: DRIVE END 8469 (09027)	EA		1	*	*	*	*	*	*	2	*	2	11
P20	4730-876-6465	FITTING, RELIEF: END PLATE, 1/8 IN. NPT MS35670-2 (96906)	EA		2	*	*	*	*	*	*	4	*	2	12
0		PLUG, PIPE: END PLATE, 1/8 IN. NPT, SQUARE HEAD H6103 (09027)	EA		2									2	13
X20		GAGE, OIL LEVEL: END PLATE, 1/2 IN. NPT 91143 (09027)	EA		2										
P2F	4310-107-3001	ROTOR, DRIVEN 8384 (09027)	EA		1	*	*	*	*	*	*	2	*	2	14
F		KEY, SQUARE: GEAR END, 3/16 IN. SQUARE, 1/2 IN. LG 8599 (09027)	EA		2									2	15
P2F	4310-106-5486	HOUSING, ROTOR 8406 (09027)	EA		1	*	*	*	*	*	*	4	*	2	16
P2F	4310-106-5538	PLATE, GEAR END 8467 (09027)	EA		1	*	*	*	*	*	*	2	*	2	17
P2F	2920-065-6604	ROTOR, DRIVE 8381 (09027)	EA		1	*	*	*	*	*	*	2	*	2	18
0		KEY: DRIVE END, 3/16 IN. SQUARE, 7/8 IN. LG 8598 (09027)	EA		1									2	19

(1) SMR CODE	(2) FEDERAL STOCK NUMBER	(3) DESCRIPTION REFERENCE ND. & MFR. CODE USABLE ON CODE	(4) UNIT OF ISSUE	(5) QTY INC IN UNIT PACK	(6) QTY INC IN UNIT	(7) 30-DAY DS MAINT ALLOWANCE			(8) 30-DAY GS MAINT ALLOWANCE			(9) 1-YR ALW PER 100 EQUIP CNTGCTY	(10) DEPOT MAINT ALW- PER 100 EQUIP	(11) ILLUS- TRATION	
						(a)	(b)	(c)	(a)	(b)	(c)			(a)	(b)
						1-20	21-50	51-100	1-20	21-50	51-100			FIG NO.	ITEM NO.
0	5310-582-5965	WASHER, LOCK: ENGINE AND COMPRESSOR MTG, 1/4 IN. SCREW SIZE MS35338-44 (96906)	EA		12									1	43
0	5305-068-0501	SCREW, CAP, HEXAGON HEAD: ENGINE AND COMPRESSOR MTG, 1/4-20 THD SIZE, 3/4 IN. LG MS35297-5 (96906)	EA		12									1	44
X20		RACKET, RIGHT SIDE: ENGINE 4MV20 (98182)	EA		1									1	45
X20		STRAP, GROUND 4MVBS (98182)	EA		1									1	46
P O T	2805-072-4871	ENGINE ASSEMBLY, GASOLINE 2A016-3 (97403)	EA		1	*	*	*	*	*	*	5	5	1	47
X20		BRACKET, LEFT SIDE: ENGINE 4MV21 (98182)	EA		1									1	48
X20		CHAIN, COUPLING: 30 IN. LG 4MV18 (98182)	EA		1									1	49
		GROUP 02 - BLOWER ASSEMBLY													
P O R	1730-055-6433	BLOWER, ROTARY 11-3202-5-378 (09027)	EA		1	*	*	*	*	*	*	5	7	2	
F		SCREW, CAP, HEXAGON HEAD: END COVER MTG, 1/4-20 THD SIZE, 2 1/4 IN. LG H90352 (09027)	EA		24									2	1
F		WASHER, LOCK: END, COVER MTG, 1/4 IN. SCREW SIZE 1214-00 (78189)	EA		24									2	2
P2F	4310-106-5528	COVER, DRIVE END 8698 (09027)	EA		1	*	*	*	*	*	*	2	*	2	3
P F	5330-960-1586	GASKET: COVER 8700 (09027)	EA		2	*	2	2	*	2	2	12	200	2	4
X2F		PIN, STRAIGHT, HEADLESS: COVERS AND HOUSING, 3/8 IN. DIA, 9/16 IN. LG 8646 (09027)	EA		6									2	5

(1) SMR CODE	(2) FEDERAL STOCK NUMBER	(3) DESCRIPTION REFERENCE NO. & MFR. CODE USABLE ON CODE	(4) UNIT OF ISSUE	(5) QTY INC IN UNIT PACK	(6) QTY INC IN UNIT	(7) 30-DAY DS MAINT ALLOWANCE			(8) 30-DAY GS MAINT ALLOWANCE			(9) 1-YR PER 100 EQUIP CNGCY	(10) DEPOT MAINT ALW. PER 100 EQUIP	(11) ILLUS- TRATION	
						(a) 1-20	(b) 21-50	(c) 51-100	(a) 1-20	(b) 21-50	(c) 51-100			(a) FIG NO	(b) ITEM NO
X1		BODY, COUPLING: ENGINE SIDE 4MV6-4 (98182)	EA		1									3	2
PO	4310-106-5543	SPIDER: COUPLING 4MV6-2 (98182)	EA		1	*	*	2	*	*	2	10	100	3	3
0	5305-225-7766	SCREW, MACHINE: COUPLING, No. 10-32 THD SIZE, 1 1/4 IN. LG, SOCKET HEAD MS24673-13 (96906)	EA		3									3	4
		BODY, COUPLING: COMPRESSOR SIDE 4MV6-3 (98183)	EA		1									3	5
0	5306-018-1608	BOLT, MACHINE: COMPRESSOR TO PLATE, 5/16-18 THD SIZE, 1 IN. LG MS3298-34 (96906)	EA		4									3	6
0		SCREW, MACHINE: PLATE TO ENGINE, 1/4-20, THD SIZE, 3/4 IN. LG MS24668-20 (96906)	EA		4									3	7
0	5310-407-9566	WASHER, LOCK: COMPRESSOR TO PLATE MS35338-45 (96906)	EA		4									3	8
0	5310-012-0368	NUT, PLAIN, HEXAGON: COMPRESSOR TO PLATE MS35690-525 (96906)	EA		4									3	9
X20		TRANSITION PLATE AND ADAPTER: COMPRESSOR TO ENGINE 4MV50-251 (98182)	EA		1									3	10
		GROUP 04 - HOSE ASSEMBLY, INFLATOR VALVE, AND FITTINGS													
M0	4720-202-6846	HOSE ASSEMBLY: DISCHARGE 2MV33 (98182) MANUFACTURE FROM:	EA		2									4	
		HOSE, RUBBER: 25 FT REQUIRED FOR EACH HOSE, STOCK No. 4720-541-8358												4	1
		CLAMP, HOSE: 4 EACH, STOCK No. 4730-278-2065												4	2
		NIPPLE: 4 EACH, STOCK No. 4730-069-9075												4	3
		COUPLING, HALF, QUICK DISCONNECT: 2 EACH, STOCK No. 4730-243-1640												4	4

(1) SMR CODE	(2) FEDERAL STOCK NUMBER	(3) DESCRIPTION REFERENCE NO. & MFR. CODE USABLE ON CODE	(4) UNIT OF ISSUE	(5) QTY INC IN UNIT PACK	(6) QTY INC IN UNIT	(7) 30-DAY DS MAINT ALLOWANCE			(8) 30-DAY GS MAINT ALLOWANCE			(9) 1-YR ALW PER 100 EQUIP. CNTG CY	(10) DEPOT MAINT ALW- PER 100 EQUIP	(11) ILLUS- TRATION	
						(a)	(b)	(c)	(a)	(b)	(c)			(a)	(b)
						1-20	21-50	51-100	1-20	21-50	51-100			FIG NO.	ITEM NO.
		WASHER, NON-METALLIC: 2 EACH, STOCK No. 5330-505-6186												4	5
PO	4730-945-7092	ADAPTER, HOSE: HOSE TO INFLATOR C1280-3A1 (22492)	EA		2	*	*	2	*	*	2	2	20	4	6
PO	4310-690-3486	VALVE, INFLATOR 9927 (53477)	EA		2	*	2	2	*	2	2	12	10	4	7
X20		STRAP, HOSE RETAINING 2MV32 (98182)	EA		2									4	8
0	5340-515-1157	CLIP, HOSE STRAP 02300 (76786)	EA		2									4	9
		GROUP 05 - FUEL FILTER ASSEMBLY													
PO	2910-905-9792	FILTER ASSEMBLY: FUEL MS51086-1 (96906)	EA		1	*	2	2	*	2	2	12	5	5	1
PO	2910-087-3612	GASKET: FILTER BOWL MS51091-4 (96906)	EA		1	*	2	2	*	2	2	20	10	5	2

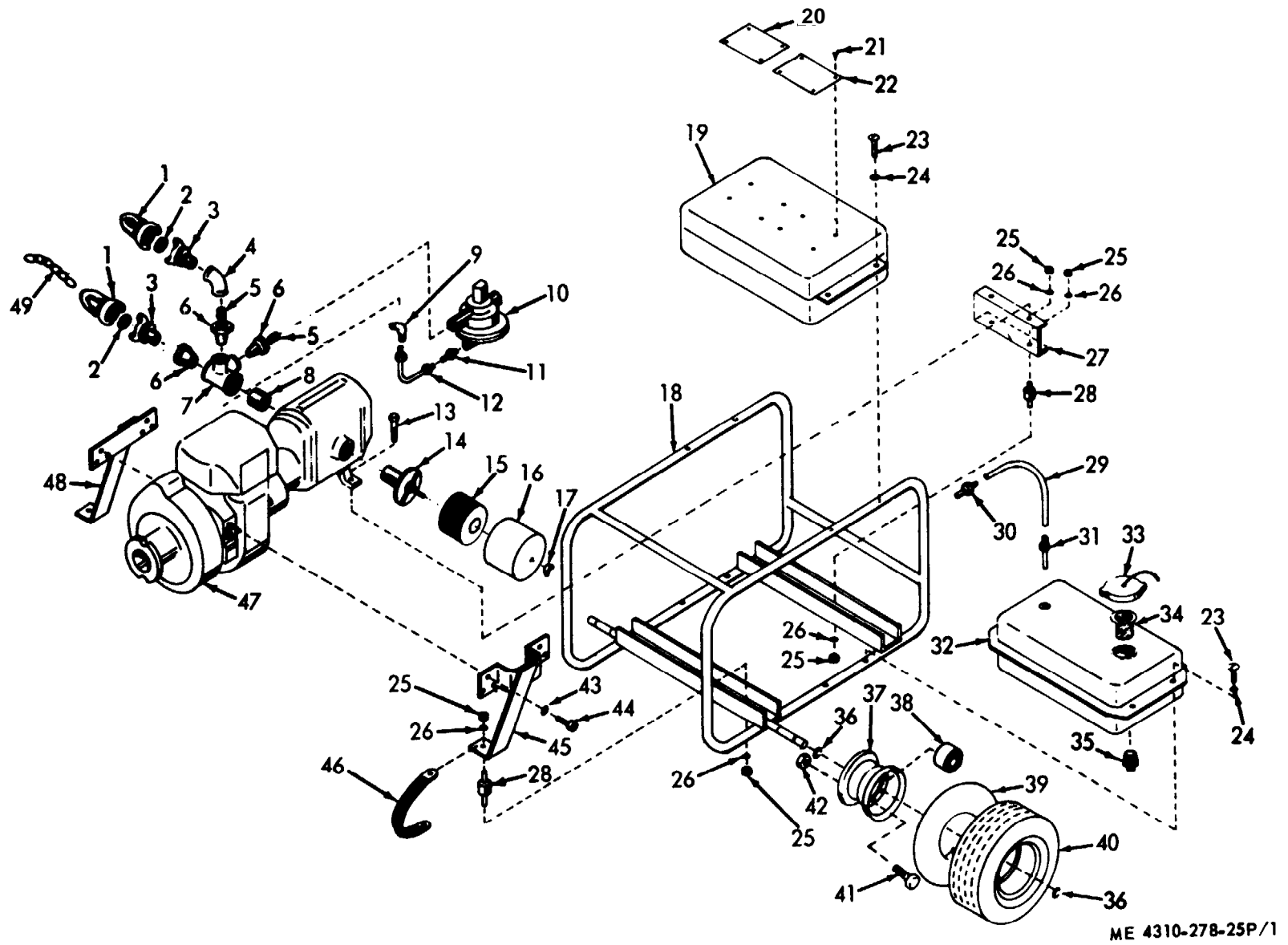


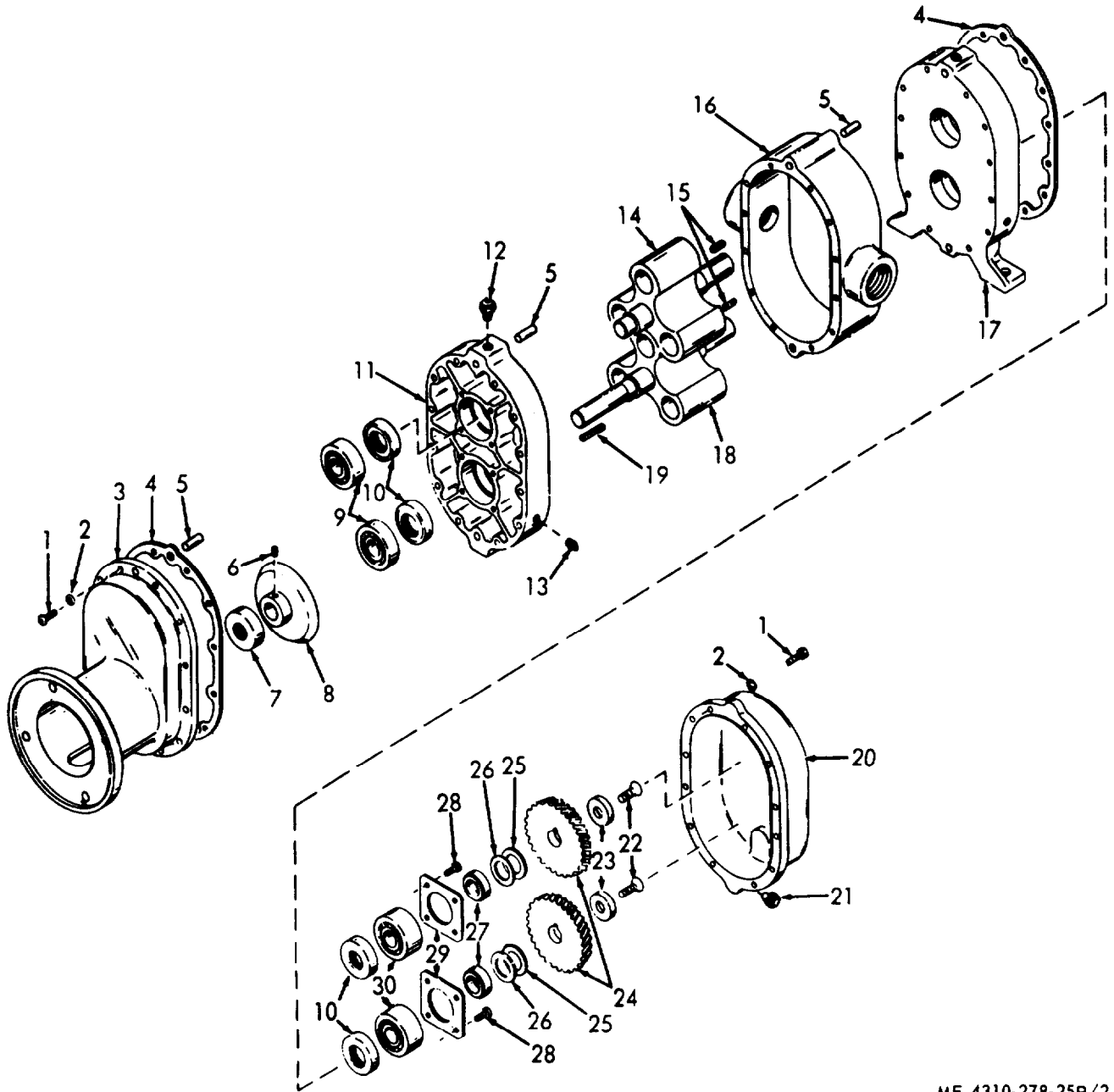
Figure No. 1 Frame, Engine, Fuel Tank, Tool Box, Wheel

LEGEND TO PARTS, FIGURE 1

ITEM NO.	FUNCT GROUP	ITEM NAME	ITEM NO.	FUNCT GROUP	ITEM NAME	ITEM NO.	FUNCT GROUP	ITEM NAME
1	5000	COUPLING HALF	18	5000	FRAME	34	5000	STRAINER
2	5000	WASHER	19	5000	BOX	35	5000	PLUG
3	5000	COUPLING HALF	20	5000	PLATE	36	5000	RING
4	5000	ELBOW	21	5000	SCREW	37	5000	HUB
5	5000	NIPPLE	22	5000	PLATE	38	5000	BEARING
6	5000	BUSHING	23	5000	SCREW	39	5000	TUBE
7	5000	MANIFOLD	24	5000	WASHER	40	5000	TIRE
8	5000	NIPPLE	25	5000	NUT	41	5000	BOLT
9	5000	ELBOW	26	5000	WASHER	42	5000	NUT
10	5000	REGULATOR	27	5000	SUPPORT	43	5000	WASHER
11	5000	ADAPTER	28	5000	SHOCK MOUNT	44	5000	SCREW
12	5000	TUBE AY	29	5000	HOSE	45	5000	BRACKET
13	5000	SCREW	30	5000	ADAPTER	46	5000	STRAP
14	5000	FILTER AY	31	5000	FUEL LINE	47	5000	ENGINE AY
15	5000	ELEMENT	32	5000	TANK AY	48	5000	BRACKET
16	5000	BONNET	33	5000	CAP	49	5000	CHAIN
17	5000	NUT						

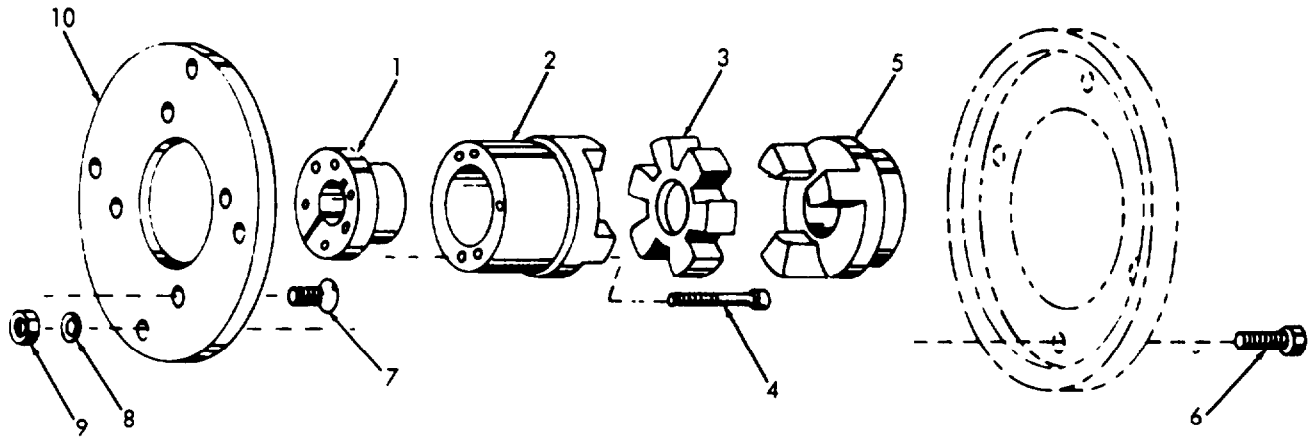
LEGEND TO PARTS, FIGURE 2

ITEM NO.	FUNCT GROUP	ITEM NAME	ITEM NO.	FUNCT GROUP	ITEM NAME	ITEM NO.	FUNCT GROUP	ITEM NAME
1	5000	SCREW	11	5000	PLATE	21	5000	PLUG
2	5000	WASHER	12	5000	FITTING	22	5000	SCREW
3	5000	COVER	13	5000	PLUG	23	5000	WASHER
4	5000	GASKET	14	5000	ROTOR	24	5000	GEAR
5	5000	PIN	15	5000	KEY	25	5000	SHIM
6	5000	SETSCREW	16	5000	HOUSING	26	5000	SHIM
7	5000	SEAL	17	5000	PLATE	27	5000	SPACER
8	5000	SLINGER	18	5000	ROTOR	28	5000	SCREW
9	5000	BEARING	19	5000	KEY	29	5000	RETAINER
10	5000	SEAL	20	5000	COVER	30	5000	BEARING



ME 4310-278-25P/2

Figure No. 2 Blower Assembly

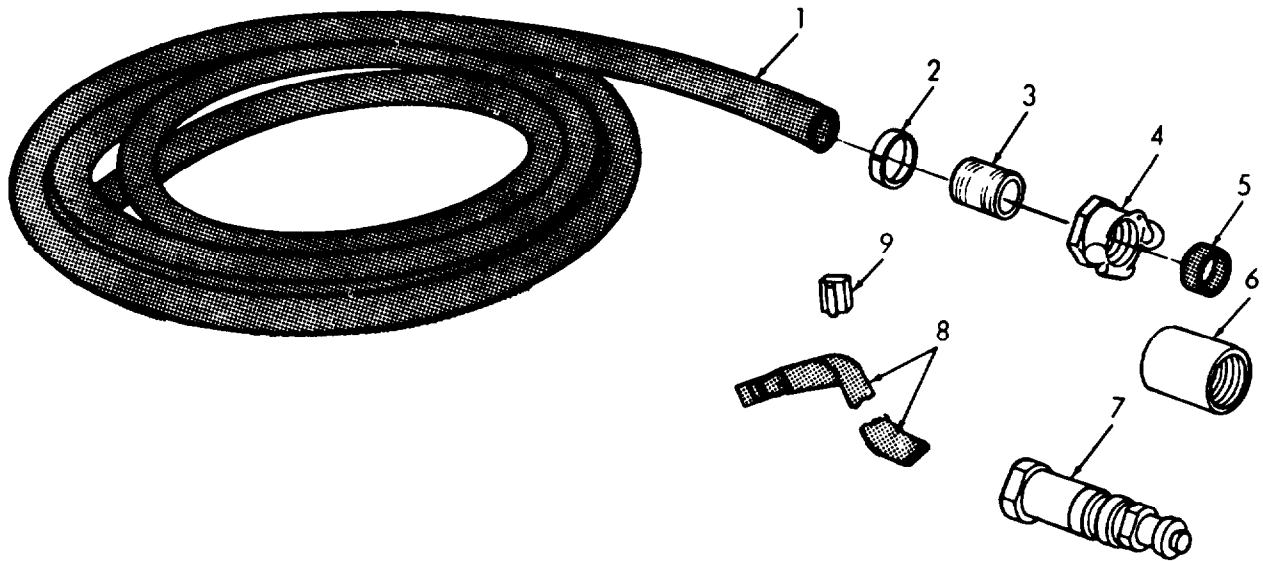


ME 4310-278-25P/3

Figure No. 3 Coupling

LEGEND TO PARTS, FIGURE 3

ITEM NO.	FUNCT GROUP	ITEM NAME
1	5000	BUSHING
2	5000	BODY
3	5000	SPIDER
4	5000	SCREW
5	5000	BODY
6	5000	BOLT
7	5000	SCREW
8	5000	WASHER
9	5000	NUT
10	5000	TRANSITION PLT



ME 4310-278-25P/4

Figure No. 4 Hose, Inflator Valve And Fittings

LEGEND TO PARTS, FIGURE 4

ITEM NO.	FUNCT GROUP	ITEM NAME	ITEM NO.	FUNCT GROUP	ITEM NAME
1	5000	HOSE	6	5000	ADAPTER
2	5000	CLAMP	7	5000	VALVE
3	5000	NIPPLE	8	5000	STRAP
4	5000	COUPLING HALF	9	5000	CLIP
5	5000	WASHER			

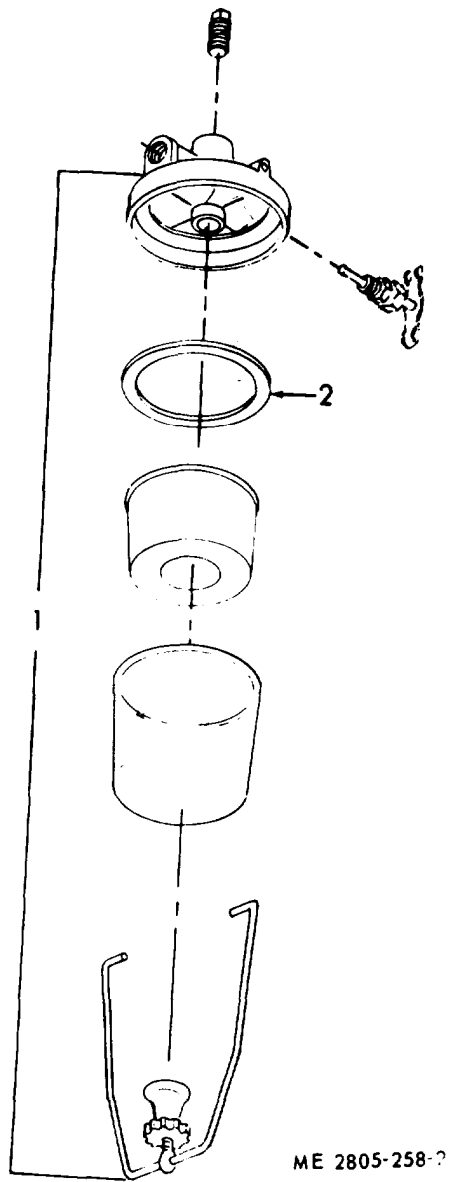


Figure No. 5 Fuel Filter

LEGEND TO PARTS, FIGURE 5

ITEM NO.	FUNCT GROUP	ITEM NAME
1	5000	FILTER AY
2	5000	GASKET

SECTION VII INDEX - FEDERAL STOCK NUMBER AND REFERENCE NUMBER
 CROSS - REFERENCE TO FIGURE AND ITEM NUMBER

<u>REFERENCE NO.</u>	<u>MFG. CODE</u>	<u>FIG. NO.</u>	<u>ITEM NO.</u>	<u>REFERENCE NO.</u>	<u>MFG. CODE</u>	<u>FIG. NO.</u>	<u>ITEM NO.</u>
AMO	72661	1	1	4MV18	98182	3	1
AM12	72661	1	3	4MV20	98182	1	45
AN936A416	88044	1	24	4MV21	98182	1	48
AWS6	72661	1	2	4MV32	98182	1	18
CA73PL	73370	1	15	4MV32	98182	1	7
C1280-3A1	22492	4	6	4MV39	98182	1	30
GC1484	73808	1	37	4MV40	98182	1	31
H6103	09027	2	13	4MV45-1	98182	1	7
H90352	09027	2	1	4MV6-1	98182	3	1
L100	75665	3		4MV6-2	98182	3	3
MS24668-20	96906	3	7	4MV6-3	98183	3	5
MS24673-13	96906	3	4	4MV6-4	98182	3	2
MS35223-79	96906	1	23	4MV70	98182	1	22
MS35296-31	96906	1	41	4MV71	98182	1	20
MS35297-5	96906	1	44	4MV75	98182	1	32
MS35297-60	96906	1	13	4MV76	98182	1	33
MS35298-34	96906	3	6	4MV77	98182	1	34
MS35338-44	96906	1	43	4MV8A	98182	1	27
MS35338-45	96906	3	8	4MV9	98182	1	19
MS35338-46	96906	1	26	5100-62	79136	1	36
MS35389-40	96906	1	40	5154453	72582	1	35
MS35670-2	96906	2	12	5204LIC	43334	2	30
MS35690-525	96906	3	9	8381	09027	2	18
MS35690-605	96906	1	25	8384	09027	2	14
MS35691-525	96906	1	42	8406	09027	2	16
MS51086-1	96906	5	1	8467	09027	2	17
MS51091-4	96906	5	2	8469	09027	2	11
RF10-22-14	73134	1	38	8488	09027	2	8
ZZT410	81348	1	39	8527	09027	2	25
02300	76786	4	9	8529	09027	2	26
11-3202-5-378	09027	2		8570	09027	2	24
11740	09027	2	23	8598	09027	2	19
1214-00	78189	2	2	8599	09027	2	15
16024M1	80201	2	7	8646	09027	2	5
16030M1	80201	2	10	8658	09027	2	20
2A016-3	97403	1	47	8660	09027	2	27
2MV11A	98182	1	9	8661	09027	2	29
2MV11A20	98182	1	11	8698	09027	2	3
2MV11A21	98182	1	12	8700	09027	2	4
2MV11A22	98182	1	9	90214-1	09027	2	28
2MV32	98182	4	8	90227	09027	2	21
2MV33	98182	4		90293	09027	2	22
3MV10	98182	1	24	90457	09027	2	6
3204	43334	2	9	91143	09027		
4MVBS	98182	1	48	9927	53477	4	7

ITEMS NOT ILLUSTRATED

<u>STOCK NO.</u>	<u>GROUP NO.</u>	<u>REFERENCE NO.</u>	<u>MFG. CODE</u>	<u>GROUP NO.</u>
1730-055-6433	02	11-3203-5-378	09027	02
3010-517-1848	03	4MV6	98182	03
4730-202-6946	04	2MV33	98182	04

SECTION VII INDEX - FEDERAL STOCK NUMBER AND REFERENCE NUMBER
 CROSS - REFERENCE TO FIGURE AND ITEM NUMBER

<u>STOCK NUMBER</u>	<u>FIGURE NO.</u>	<u>ITEM NO.</u>
1730-055-6433	2	
1730-065-2416	2	24
2530-1069-5527	1	37
2610-174-1792	1	39
2610-528-9697	1	40
2805-072-4871	1	47
2910-087-3612	5	2
2910-106-1985	1	33
2910-106-1987	1	32
2910-892-2984	1	15
2910-905-9792	5	1
2920-065-6604	5	18
3110-144-8510	2	9
3110-554-5826	2	30
4310-106-4379	1	19
4310-106-4380	1	14
4310-106-5486	2	16
4310-106-5528	2	3
4310-106-5535	2	20
4310-106-5538	2	17
4310-106-5541	2	11
4310-106-5542	3	
4310-106-5543	3	3
4310-107-3001	2	12
4310-109-3437	2	8
4310-567-1596	1	1
4310-690-3486	4	7
4310-785-3460	1	10
4720-202-6846	4	
4730-106-4381	1	11
4730-106-4382	1	9
4730-106-5529	1	12
4730-106-5531	1	7
4730-106-5532	1	30
4730-106-5533	1	31
4730-129-9053	1	4
4730-196-0847	1	6
4730-196-1469	1	5
4730-278-3389	1	
4730-496-5954	1	35
4730-555-1767	1	8
4730-826-6465	2	12
4730-945-7092	4	6
5305-014-5379	1	21
5305-068-0501	1	44
5305-225-7766	3	4
5305-269-3211	1	13
5305-543-2224	1	23
5306-018-1333	1	41
5306-1018-1608	3	6
5310-012-0368	1	9
5310-012-0377	1	25
5310-167-0719	1	24
5310-407-9566	3	8
5310-582-5965	1	43
5310-637-9541	1	26
5310-655-9684	1	42
5310-881-96369	1	17
5310-967-2422	2	23
5330-505-6186	1	2
5330-948-7140	2	7
5330-9487-7141	2	10
5330-960-1586	2	4
5340-065-3529	2	29
5340-065-3530	2	27
5340-298-6563	1	36
5340-515-1157	4	9

By Order of the Secretary of the Army:

W. C. WESTMORELAND,
General, United States Army,
Chief of Staff.

Official:

KENNETH G. WICKHAM,
Major General, United States Army,
The Adjutant General.

Distribution:

To be distributed in accordance with DA Form 12-25, Section I, (qty rqr block no. 30) organizational requirements for Air Compressors 60 CFM.

*U.S. GOVERNMENT PRINTING OFFICE: 1993 0 - 342-421 (80315)

